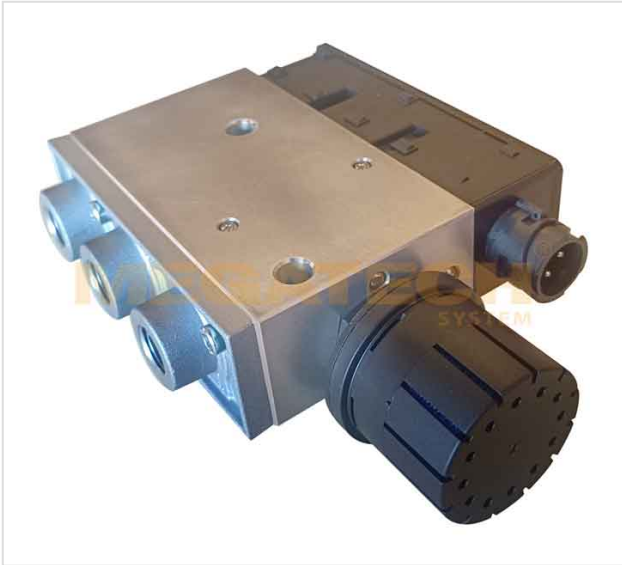


91.10680.716 VALVE (PRESSURE CONTROL)



91.10680.716

VALVE (PRESSURE CONTROL)

DC : 24V

Ports 1 ,21 , 22 : M16 x 1.5

Installation Holes :2x $\text{Å} \sim 10$

VEHICLE	OE
VOLVO	394 4716
KNORR	0501100031000